

# DATA SHEET



## Three Phase Induction Motor - Squirrel Cage

Customer :						
Product line		: W20 GENERAL PURPOSE IE3 Three-Phase		Product code :		16017724
Frame	:	180L		Locked rotor time	:	23s (cold) 13s (hot)
Output	:	22 kW (30 HP)		Temperature rise	:	80 K
Poles	:	4		Duty cycle	:	S1
Frequency	:	50 Hz		Ambient temperature	:	-20°C to +40°C
Rated voltage	:	400/690 V		Altitude	:	1000
Rated current	:	41.1/23.8 A		Protection degree	:	IP55
L. R. Amperes	:	308/179 A		Cooling method	:	IC411 - TEFC
LRC	:	7.5		Mounting	:	B3T
No load current	:	19.5/11.3 A		Rotation <sup>1</sup>	:	Both (CW and CCW)
Rated speed	:	1475 rpm		Noise level <sup>2</sup>	:	62.0 dB(A)
Slip	:	1.67 %		Starting method	:	Direct On Line
Rated torque	:	143 Nm		Approx. weight <sup>3</sup>	:	215 kg
Locked rotor torque	:	300 %				
Breakdown torque	:	330 %				
Insulation class	:	F				
Service factor	:	1.00				
Moment of inertia (J)	:	0.2262 kgm <sup>2</sup>				
Design	:	N				
Output	50%	75%	100%	Foundation loads		
Efficiency (%)	92.2	93.0	93.0	Max. traction		
Power Factor	0.65	0.76	0.83	Max. compression		
Losses at normative operating points (speed;torque), in percentage of rated output power						
P1 (0,9;1,0)	P2 (0,5;1,0)	P3 (0,25;1,0)	P4 (0,9;0,5)	P5 (0,5;0,5)	P6 (0,5;0,25)	P7 (0,25;0,25)
7.4	6.5	6.0	3.5	2.6	1.7	1.2
Bearing type	:	<u>Drive end</u> 6211 ZZ C3		<u>Non drive end</u> 6209 ZZ C3		
Sealing	:	V'Ring		V'Ring		
Lubrication interval	:	-		-		
Lubricant amount	:	-		-		
Lubricant type	:	Mobil Polyrex EM				
Notes						
This revision replaces and cancel the previous one, which must be eliminated. (1) Looking the motor from the shaft end. (2) Measured at 1m and with tolerance of +3dB(A). (3) Approximate weight subject to changes after manufacturing process. (4) At 100% of full load.				These are average values based on tests with sinusoidal power supply, subject to the tolerances stipulated in IEC 60034-1.		
Rev.	Changes Summary			Performed	Checked	Date
Performed by						
Checked by					Page	Revision
Date	08/12/2025				1 / 2	

# DATA SHEET

## Three Phase Induction Motor - Squirrel Cage

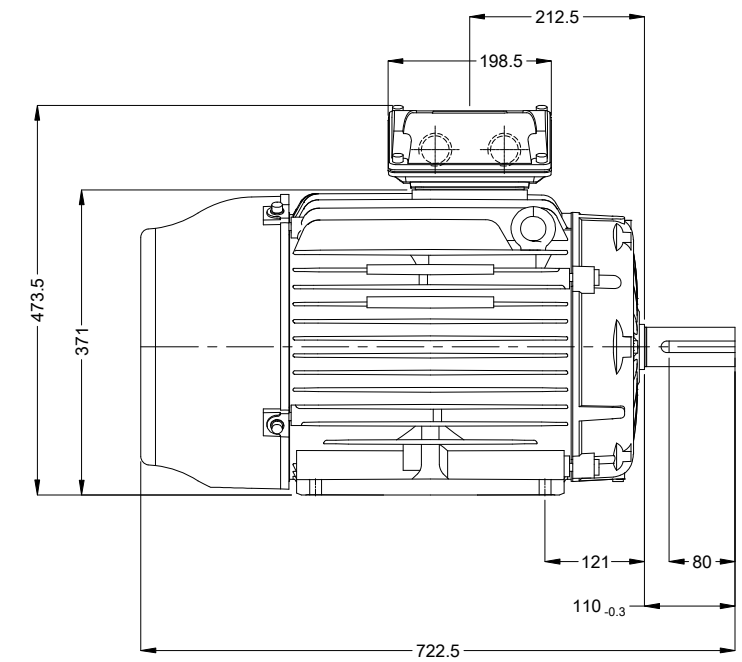
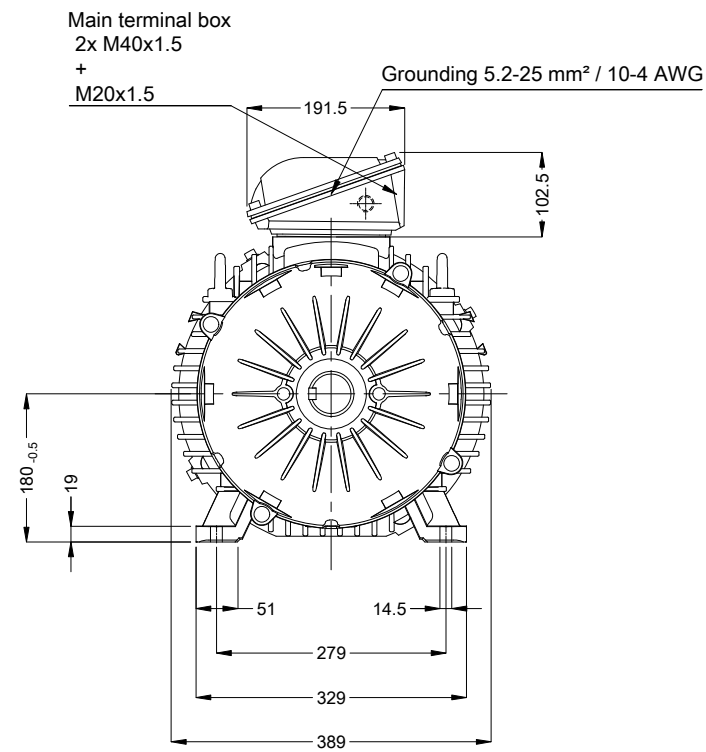
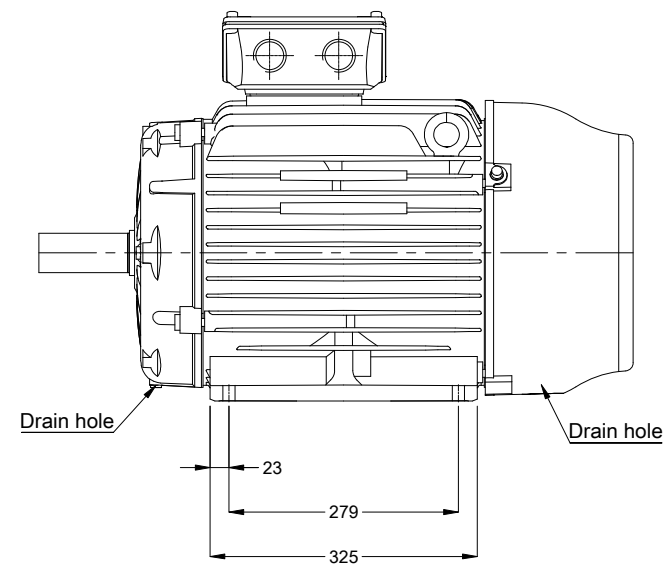


Customer : \_\_\_\_\_

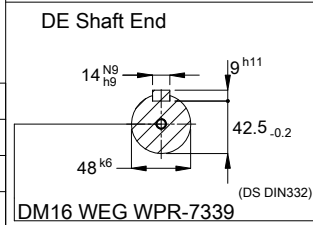
### Thermal protection

ID	Application	Type	Quantity	Sensing Temperature
1	Winding	Thermistor - 2 wires	1 x Phase	155 °C

Rev.	Changes Summary	Performed	Checked	Date
Performed by				
Checked by			Page	Revision
Date	08/12/2025		2 / 2	



Color RAL 7042  
 Painting plan 203A  
 Mounting NEMA F-3  
 Mounting B3T



22 kW 04 Poles 50 Hz A

Scale 1 : 9

ECM	LOC		THREE PH. MOTOR W20 GENERAL PURPOSE IE3	HYBRISUSER					00
EXECUTED	HYBRISUSER		FRAME 180L IP55 TEFC	EXECUTED	CHECKED	RELEASED	DATE	VER	
CHECKED									
RELEASED									
REL. DATE									

PREVIEW

WDD 00

SHEET 1 / 1

