

CONFIGURATION OVERVIEW / MP708899/L1.R1

Product code 3GBA282210-ADN

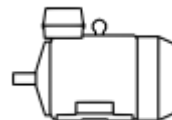
M2BAX 280SMA 4, 75 kW, 4 poles

GENERAL

MEPS	EU-MEPS	Altitude	1000 m.a.s.l.
MEPS scope	Inside	Ambient min / max	-20 °C / 40 °C
Motor design	BASIC	Ex atmosphere	No
Legal marking	CE	Customs tariff number	85015290

MAIN CHARACTERISTICS

Motor type	M2BAX 280SMA 4
Product code	3GBA282210-ADN
ID code	
Shaft height	280 mm
Power	75 kW
Rated voltage U_N	400 V \pm 5 % (IEC 60034-1)
Rated frequency f_N	50 Hz \pm 2 % (IEC 60034-1)
Number of poles	4
Frame material	Cast Iron
Insulation class	F
Temperature class	-
Mounting	IM1001 IMB3



Enclosure protection class	IC411
Cooling	IP55
Weight	705 kg

OPERATING POINTS

Power [kW]	Voltage [V]	Connec-tion	Frequency [Hz]	Effic. Class	Efficiency [%]	Nominal Cur-rent [A]	Is/In	Duty	Speed [rpm]	T Rise
75	690	Y	50	IE4	96	76	7.8	S1	1487	B
75	400	D	50	IE4	96	131	7.8	S1	1487	B
75	660	Y	50	IE4	96	79.5	7.1	S1	1485	B
75	380	D	50	IE4	96	136	7	S1	1485	B

VARIANT CODES

No variant codes selected.

MECHANICAL

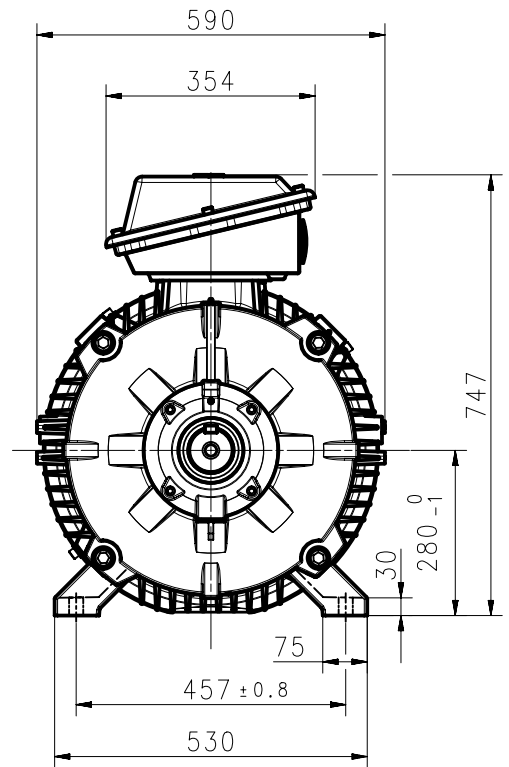
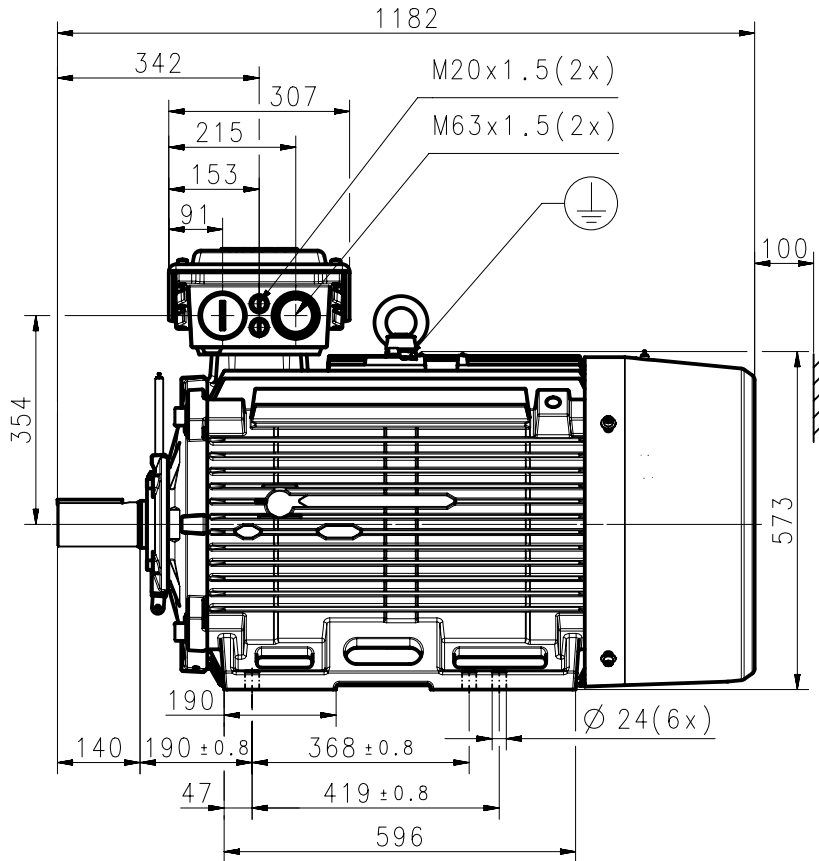
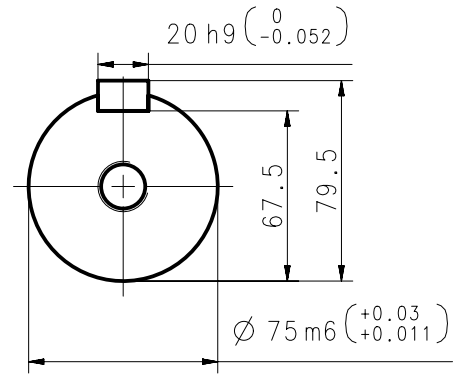
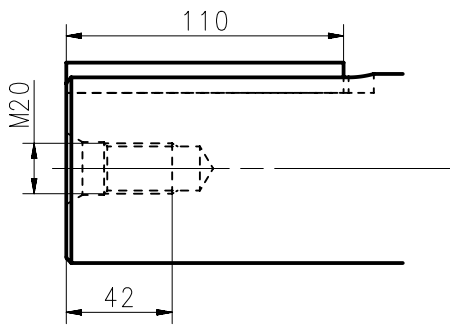
Direction of rotation	CW or CCW
Vibration	A
Paint colour	MUNSELL 8B 4.5/3.25
Paint system	C3 - Medium
Bearing, Drive end	Ball Bearing – 6316/C3
Bearing, Non-drive end	Ball Bearing – 6316/C3
Lubrication style	Regreasable
Main terminal box position	D-End top
Main terminal box turnable	4 x 90 degr
Main terminal cable entry	2xM50x1.5
Fan material	Glass-fiber reinforced polypropylene
Fan cover material	Steel
Sound pressure level	72 LpdBA

ACCESSORIES

No accessories selected.

MONITORING

Winding PTC, PTC 1 per phase 150 degr. C
 Vibration sensing, No SPM nipples



Additional information:

Dimension Print	Motor type: IE4 M2BAX 280SMA4/SMB4/SMB6 B3, B6, B7, B8, V5, V6	Document No: 3GZC500028-586 B
	Description: STANDARD SQUIRREL CAGE MOTOR	

Unit: IEC LV Motors
Date: 01-Aug-2022

Issued by: Zi, Winifred-Dandan
Approved by: Wang, Serena-Shinan

Replaces:
Replaced by:



Customer Reference:

