

CONFIGURATION OVERVIEW / MP709526/L1.R1

# Product code 3GBP281230-ADR

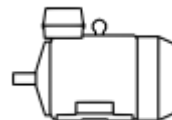
## M3BP 280SMC 2, 90 kW, 2 poles

### GENERAL

MEPS	EU-MEPS	Altitude	1000 m.a.s.l.
MEPS scope	Inside	Ambient min / max	-20 °C / 40 °C
Motor design	BASIC	Ex atmosphere	No
Legal marking	CE	Customs tariff number	85015381

### MAIN CHARACTERISTICS

Motor type	M3BP 280SMC 2
Product code	3GBP281230-ADR
ID code	280C90P2EE5
Shaft height	280 mm
Power	90 kW
Rated voltage $U_N$	400 V $\pm$ 5 % (IEC 60034-1)
Rated frequency $f_N$	50 Hz $\pm$ 2 % (IEC 60034-1)
Number of poles	2
Frame material	Cast Iron
Insulation class	F
Temperature class	-
Mounting	IM1001 IMB3



Enclosure protection class	IC411
Cooling	IP55
Weight	725 kg

**OPERATING POINTS**

Power [kW]	Voltage [V]	Connec-tion	Frequency [Hz]	Effic. Class	Efficiency [%]	Nominal Cur-rent [A]	Is/In	Duty	Speed [rpm]	T Rise
90	690	Y	50	IE5	96.6	89.5	7.9	S1	2980	B
90	400	D	50	IE5	96.6	154	7.9	S1	2980	B
90	415	D	50	IE5	96.6	150	8.4	S1	2982	B
90	460	D	60	IE5	96.3	134	9	S1	3583	B
90	660	Y	50	IE5	96.6	92.7	7.3	S1	2978	B
90	380	D	50	IE5	96.6	160	7.3	S1	2978	B

**VARIANT CODES**

No variant codes selected.

**MECHANICAL**

Direction of rotation	-
Vibration	A
Paint colour	MUNSELL 8B 4.5/3.25
Paint system	C3 - Medium
Bearing, Drive end	Ball Bearing – 6316/C3
Bearing, Non-drive end	Ball Bearing – 6316/C3
Lubrication style	Regreasable
Main terminal box position	D-End top
Main terminal box turnable	4 x 90 degr
Main terminal cable entry	2xM63x1.5
Fan material	Glass-fiber reinforced polypropylene
Fan cover material	Steel
Sound pressure level	73 LpdBA

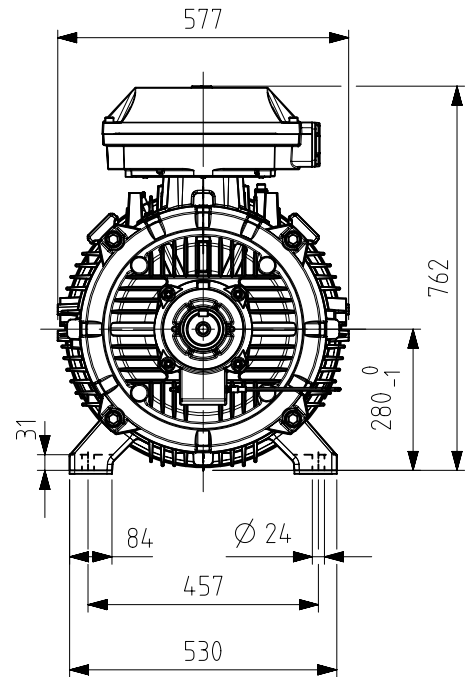
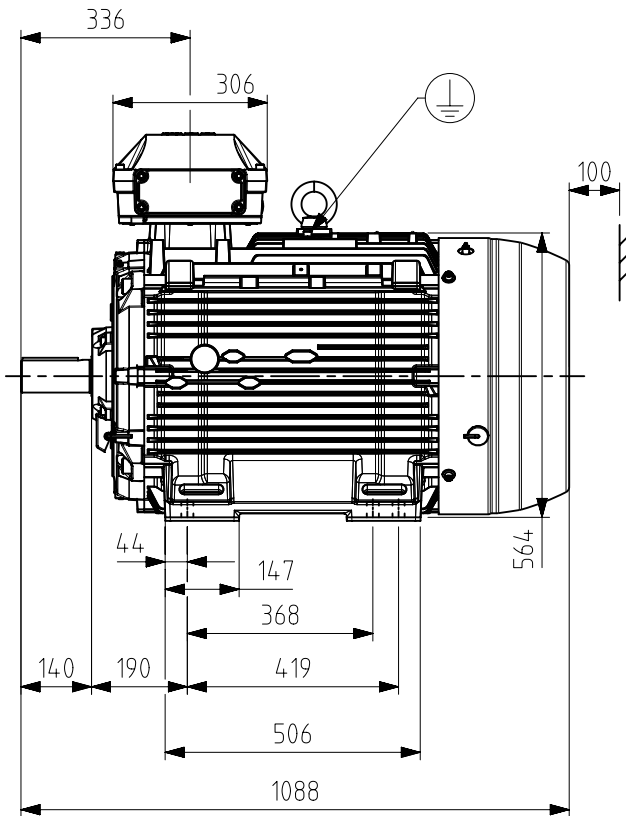
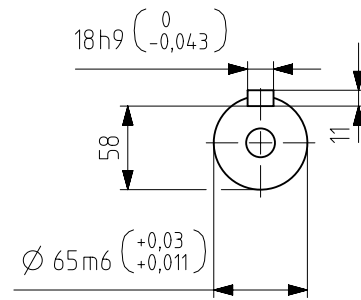
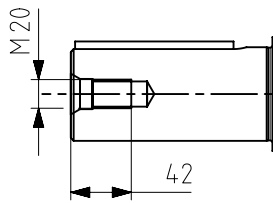
**ACCESSORIES**

No accessories selected.

**MONITORING**

Winding PTC, PTC 1 per phase 150 degr. C  
 Vibration sensing, Standard SPM Nipples





Additional information:

<b>Dimension Print</b>	Motor type: M3BP280 (G/K/L/M) SM_2; B3, V5, V6, B6, B7, B8	Document No: 3GZF500028-1571 B
	M3GP/HP 280SM_2 B3, B6, B7, B8, V6	

Description: STANDARD SQUIRREL CAGE MOTOR

Unit: Motors and Generators Date: 23-10-31	Issued by: Sami Tynismaa Approved by: Tomi Rantamarkkula	Replaces: Replaced by:
---	---	---------------------------

<b>ABB</b>	Customer Reference:	
------------	---------------------	--