

CONFIGURATION OVERVIEW / MP710336/L1.R1

Product code 3GBP282230-ADR

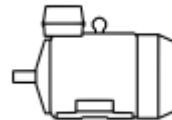
M3BP 280SMC 4, 75 kW, 4 poles

GENERAL

MEPS	EU-MEPS	Altitude	1000 m.a.s.l.
MEPS scope	Inside	Ambient min / max	-20 °C / 40 °C
Motor design	BASIC	Ex atmosphere	No
Legal marking	CE	Customs tariff number	85015290

MAIN CHARACTERISTICS

Motor type	M3BP 280SMC 4
Product code	3GBP282230-ADR
ID code	280C75P4EE5
Shaft height	280 mm
Power	75 kW
Rated voltage U_N	400 V \pm 5 % (IEC 60034-1)
Rated frequency f_N	50 Hz \pm 2 % (IEC 60034-1)
Number of poles	4
Frame material	Cast Iron
Insulation class	F
Temperature class	-
Mounting	IM1001 IMB3



Enclosure protection class	IC411
Cooling	IP55
Weight	725 kg

OPERATING POINTS

Power [kW]	Voltage [V]	Connec-tion	Frequency [Hz]	Effic. Class	Efficiency [%]	Nominal Cur-rent [A]	Is/In	Duty	Speed [rpm]	T Rise
75	690	Y	50	IE5	96.7	79.6	8.6	S1	1489	B
75	400	D	50	IE5	96.7	137	8.6	S1	1490	B
75	415	D	50	IE5	96.7	134	9	S1	1490	B
75	460	D	60	IE5	96.9	121	9.8	S1	1791	B
75	660	Y	50	IE5	96.7	81.8	7.9	S1	1488	B
75	380	D	50	IE5	96.7	142	7.9	S1	1488	B

VARIANT CODES

No variant codes selected.

MECHANICAL

Direction of rotation	CW or CCW
Vibration	A
Paint colour	MUNSELL 8B 4.5/3.25
Paint system	C3 - Medium
Bearing, Drive end	Ball Bearing – 6316/C3
Bearing, Non-drive end	Ball Bearing – 6316/C3
Lubrication style	Regreasable
Main terminal box position	D-End top
Main terminal box turnable	4 x 90 degr
Main terminal cable entry	2xM63x1.5
Fan material	Glass-fiber reinforced polypropylene
Fan cover material	Steel
Sound pressure level	67 LpdBA

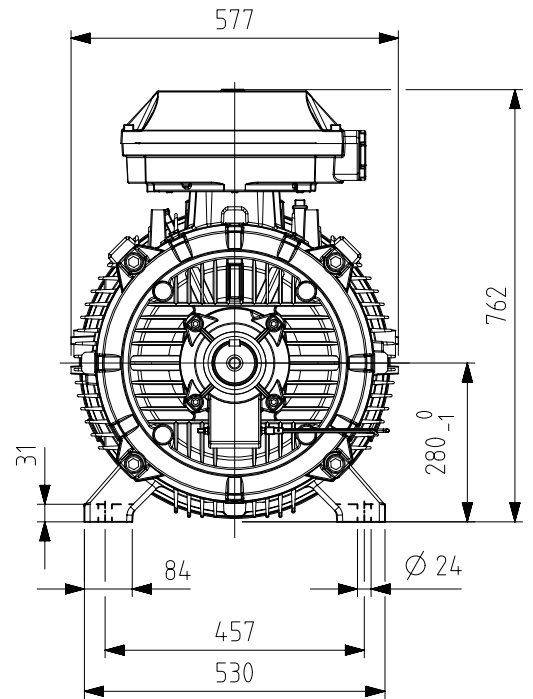
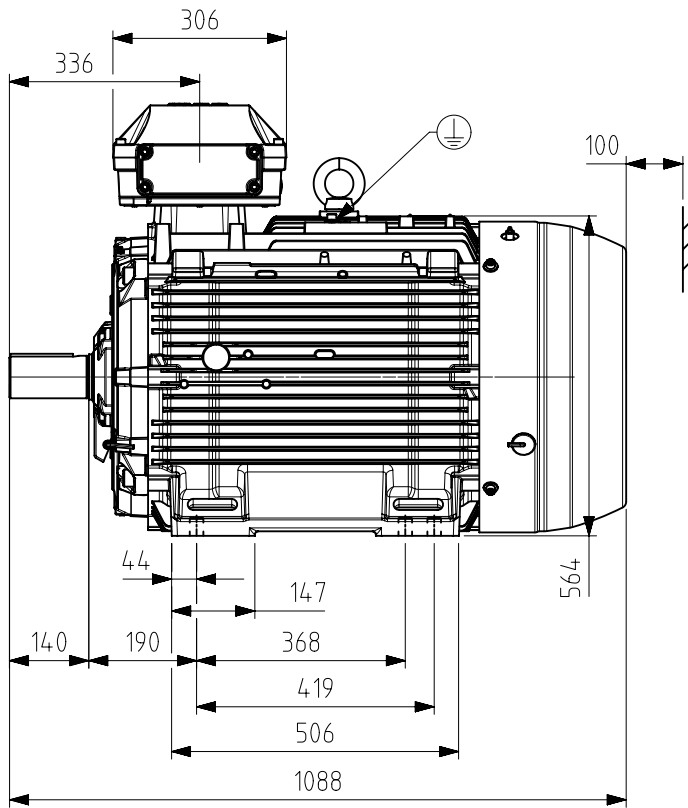
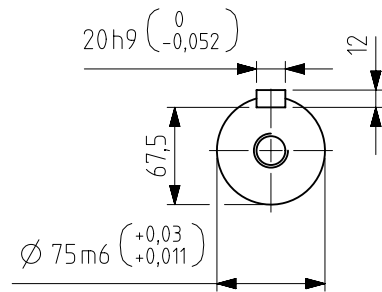
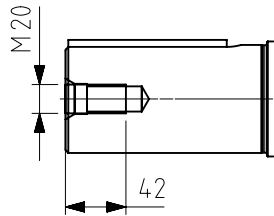
ACCESSORIES

No accessories selected.

MONITORING

Winding PTC, PTC 1 per phase 150 degr. C
 Vibration sensing, Standard SPM Nipples





Additional information:

Dimension Print	Motor type: M3BP280 (G/K/L/M) SM_4-12; B3, V5, V6, B6, B7, B8	Document No: 3GZF500028-1590 A
	M3GP/HP 280SM_4-12; B3, V6, B6, B7, B8	

Description:
STANDARD SQUIRREL CAGE MOTOR.

Unit: Motors and Generators Date: 11-Jan-2019	Issued by: Hautala, Janne Approved by: Vuorinen, Juha	Replaces: Replaced by:
--	--	---------------------------



Customer Reference:

